



Mapping the ripple effects of a social movement

Alan Inman-Ward
Head of Insight & Intelligence
Active Gloucestershire



@Alan_InmanWard



@AlanInmanWard



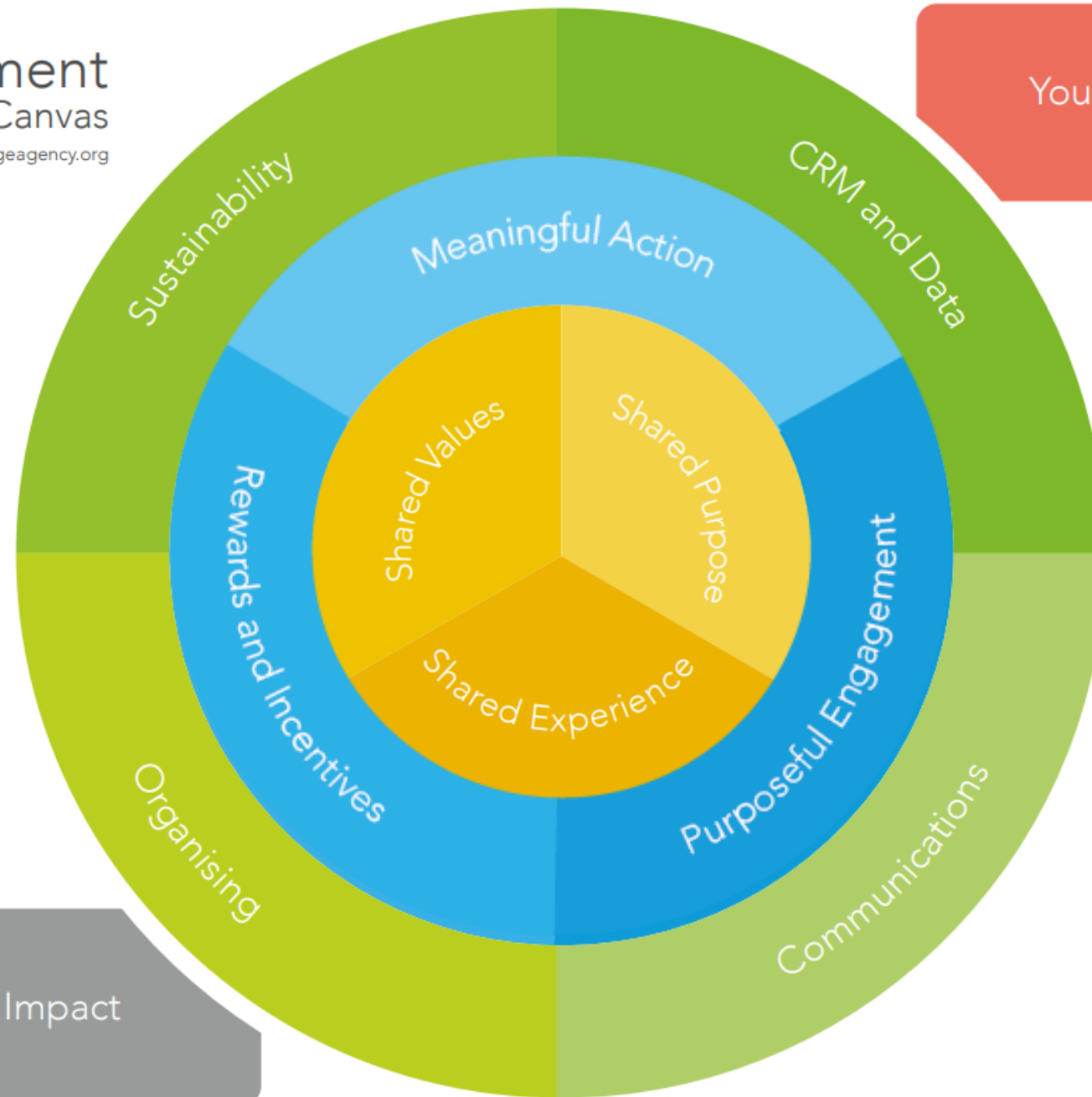
Active
Gloucestershire

Active Gloucestershire

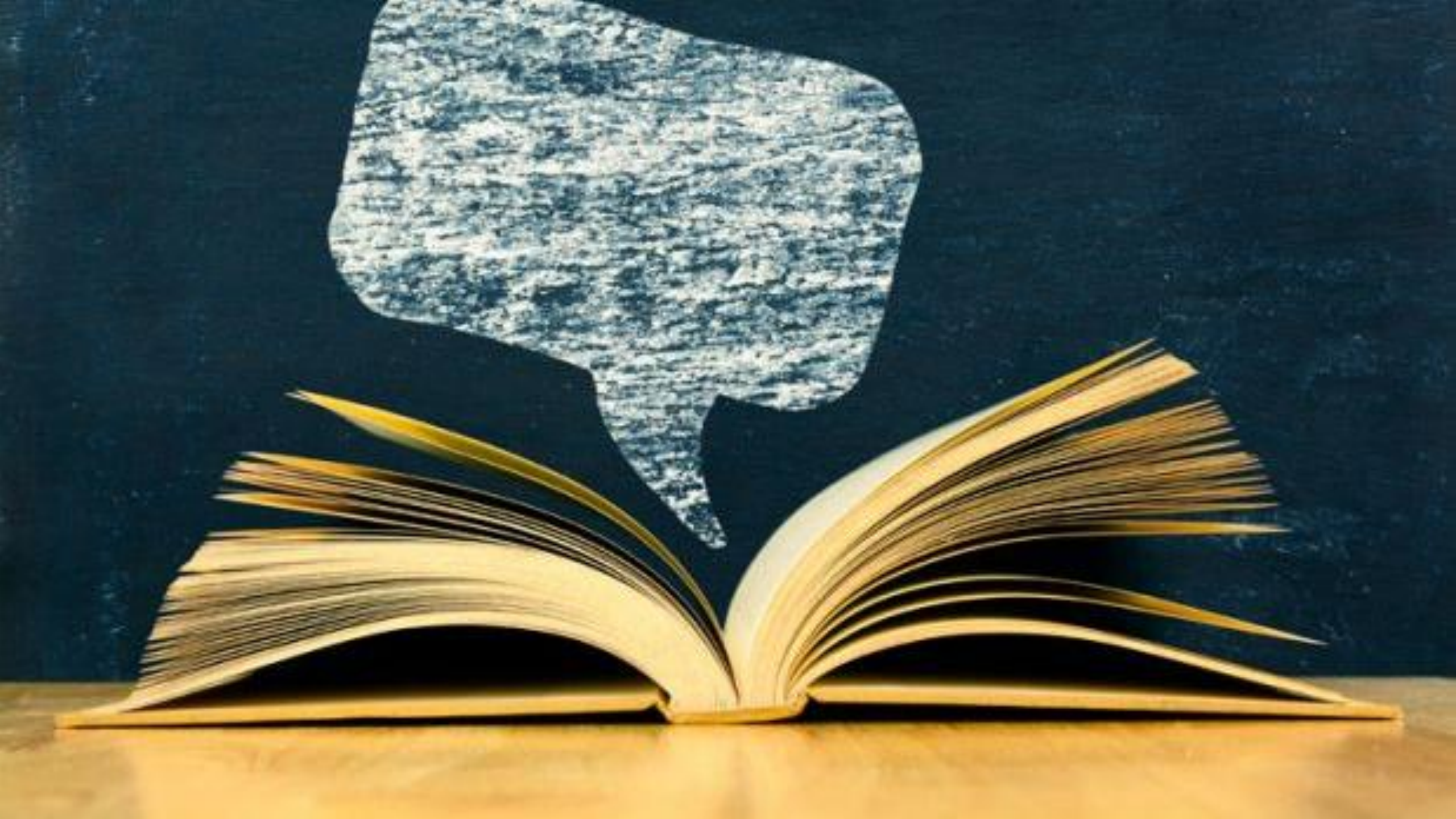


**we
can
move**

Your People





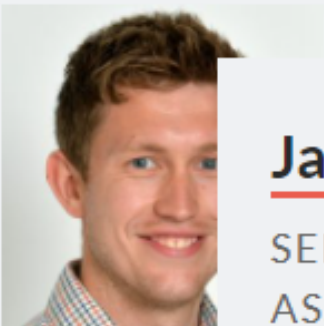


Evaluating a whole systems approach to addressing low levels of physical activity

27 July 2021



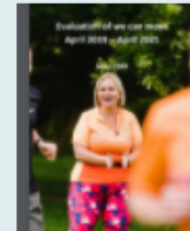
ARC West contact



James Nobles

SENIOR RESEARCH
ASSOCIATE, QUALITATIVE
RESEARCH

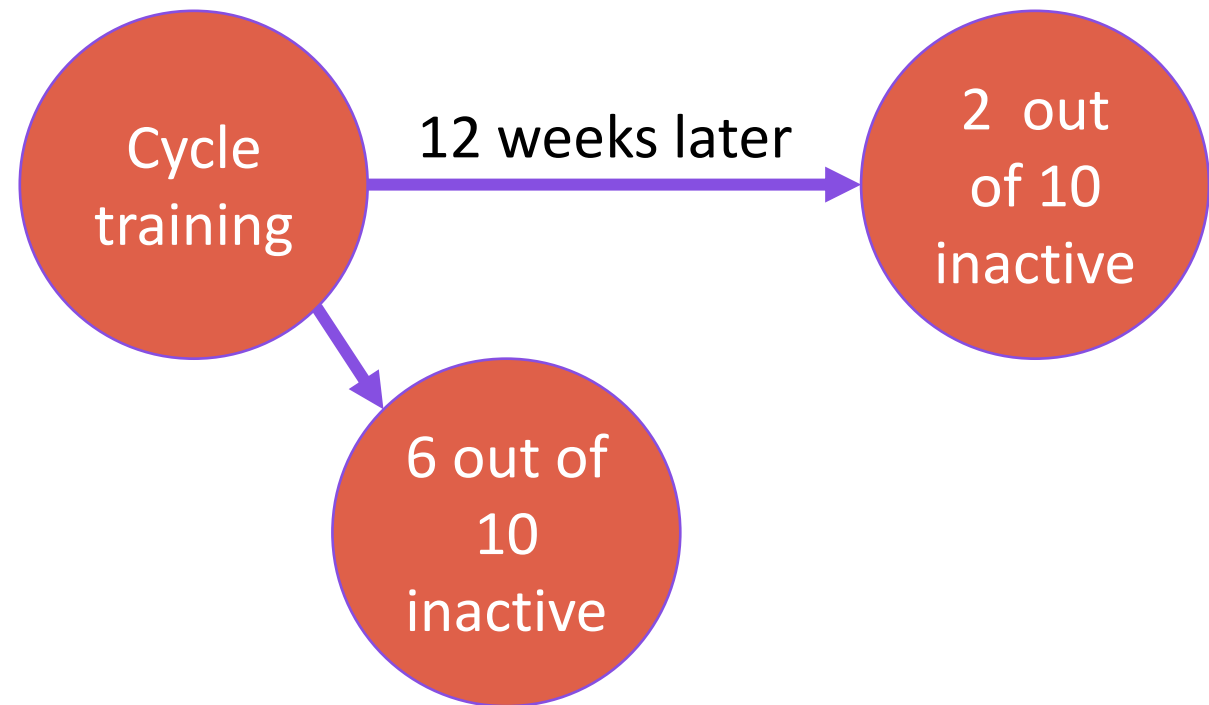
Paper

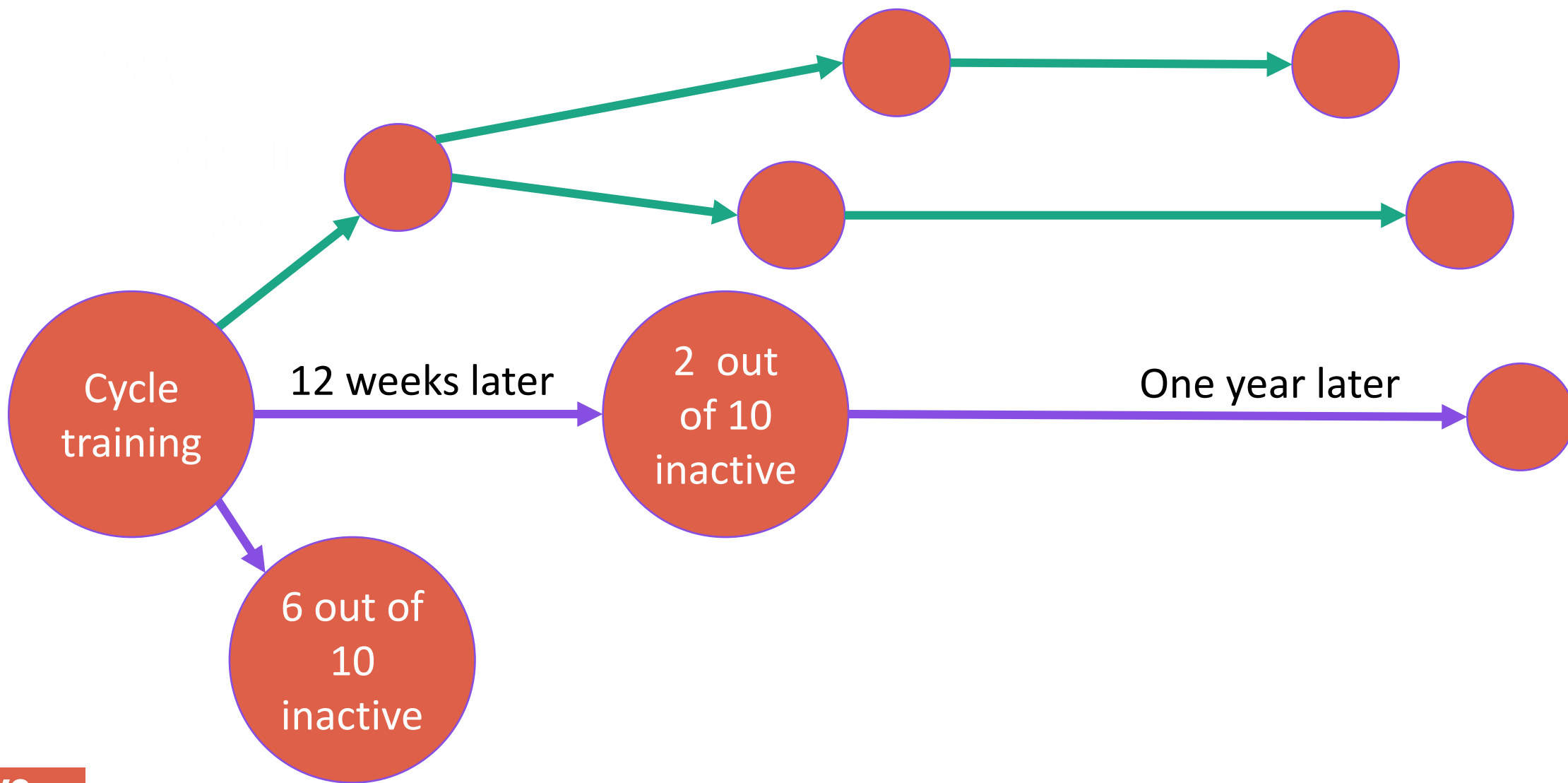


PAPER:

**Evaluation of we can move April
2019 - April 2021**

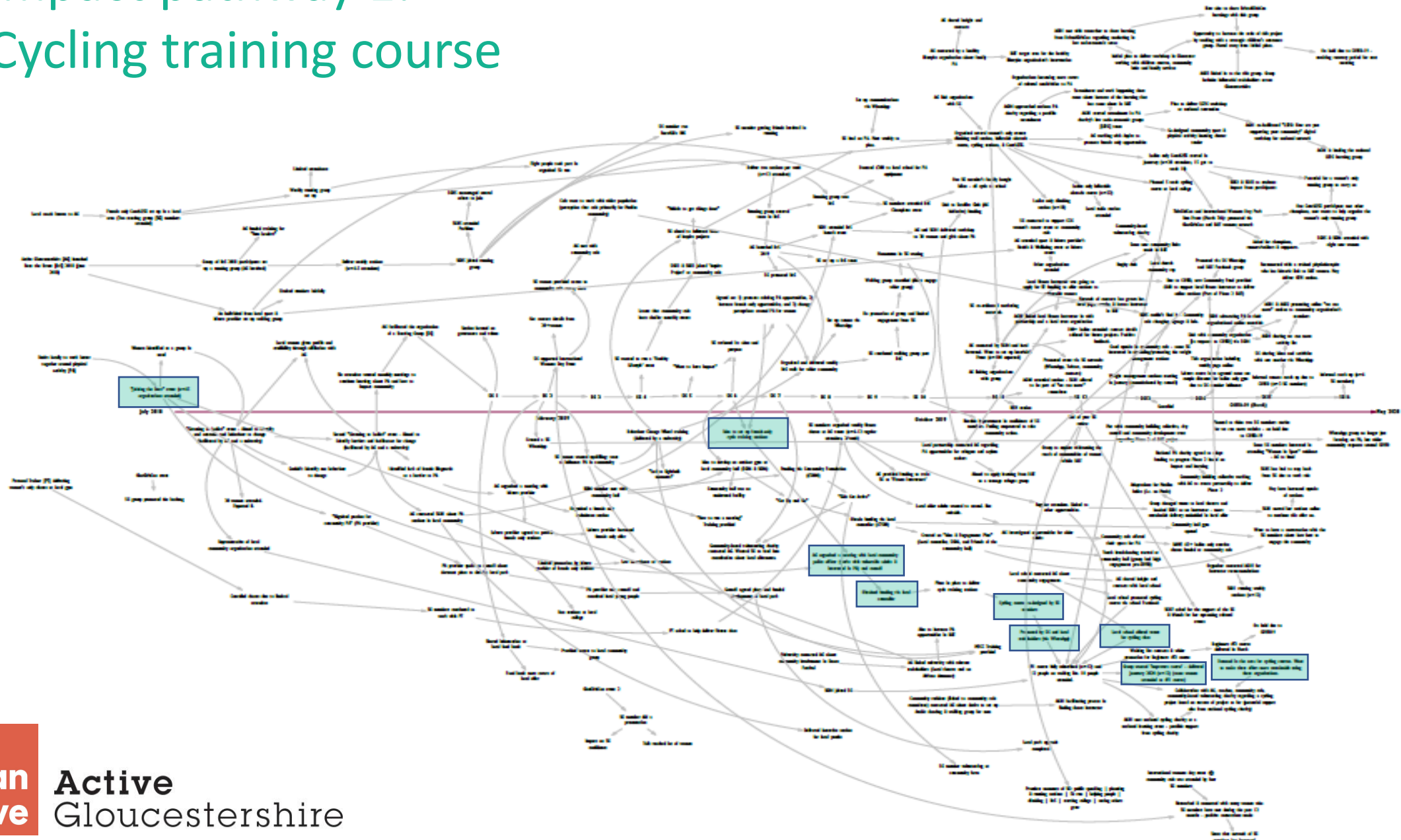
[Download the paper](#)



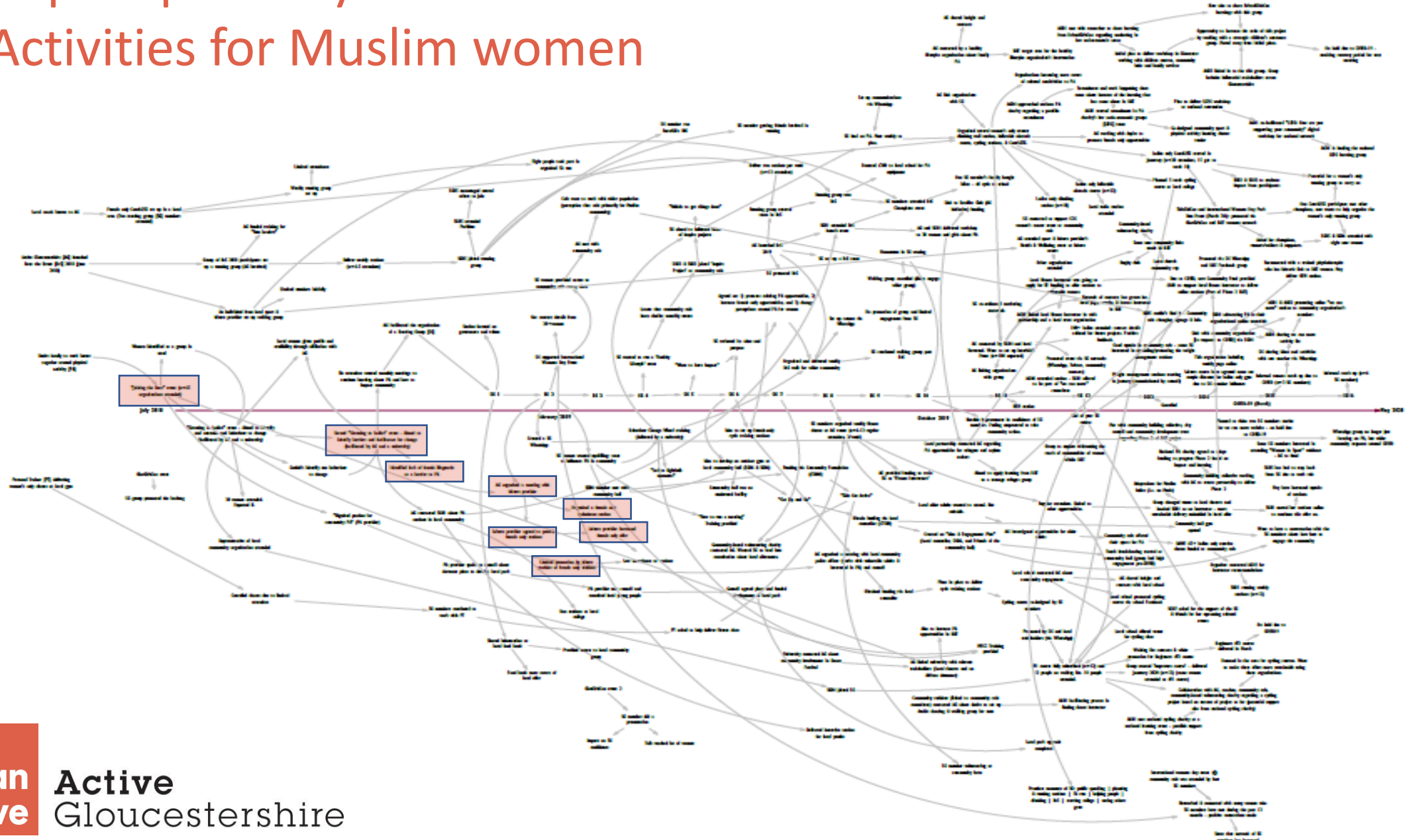


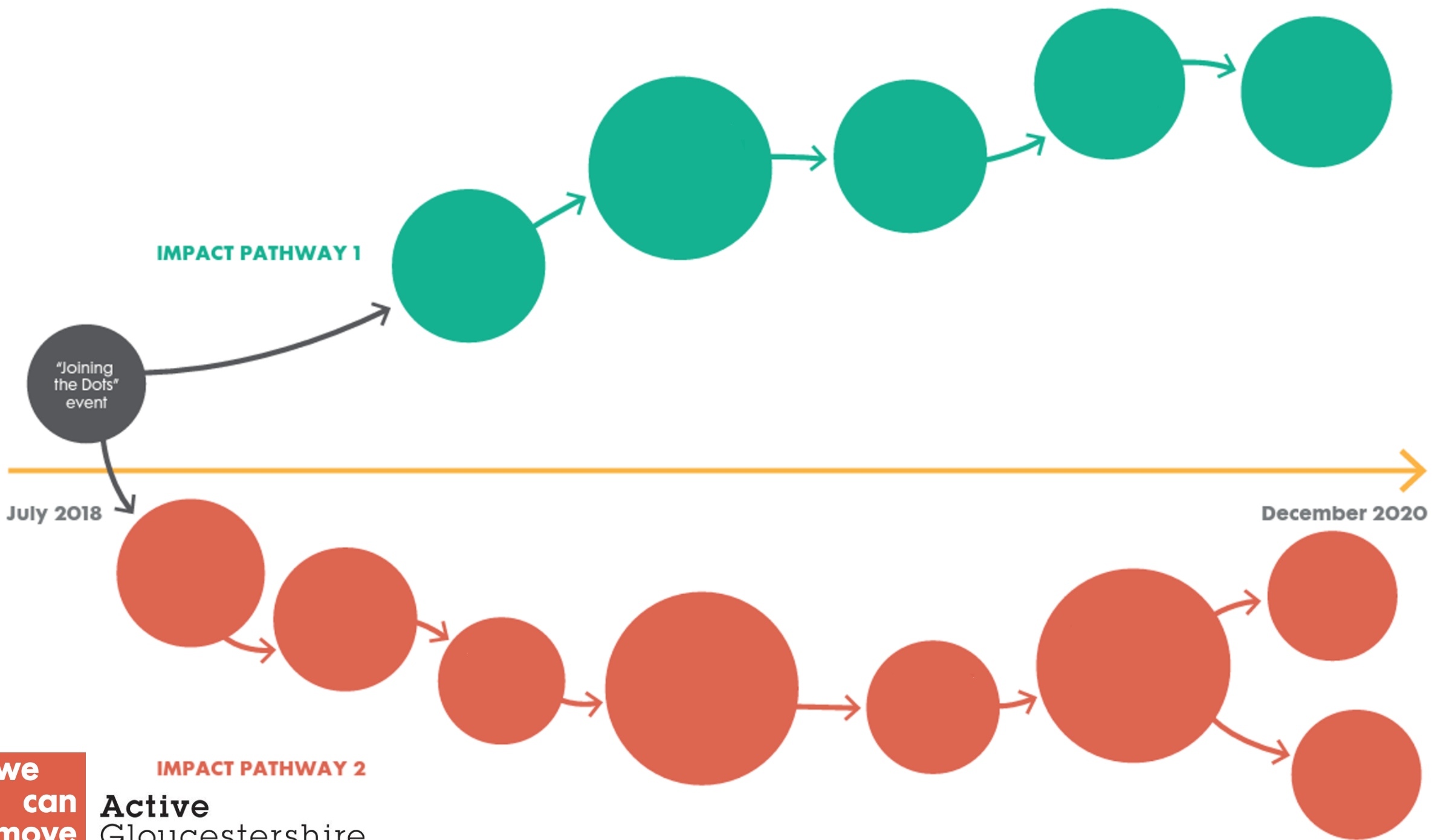


Impact pathway 1: Cycling training course



Impact pathway 2: Activities for Muslim women







Mapping the ripple effects of a social movement

Find out more:

Evaluation report: www.tinyurl.com/RippleEffectsMap

Have a chat: www.calendly.com/AlanInman-Ward



@AlanInmanWard



@Alan_InmanWard



Active
Gloucestershire